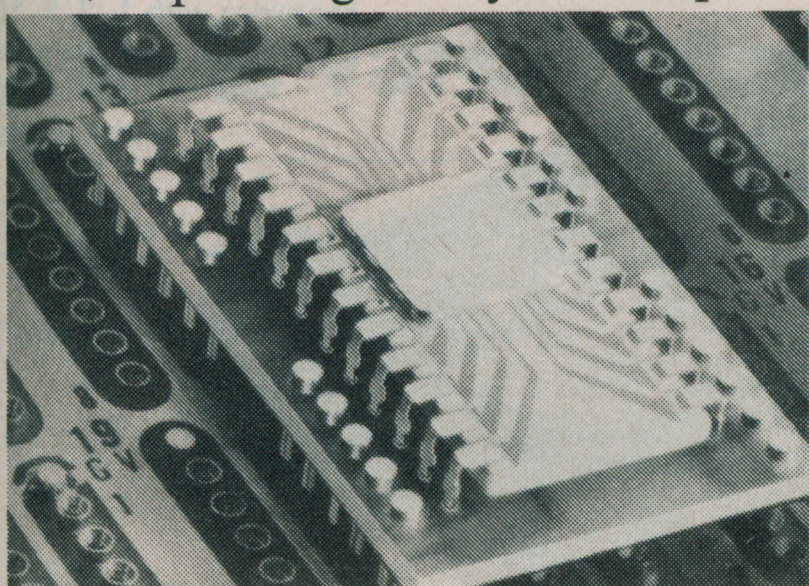


New products

Inc. The LSI DIPs are soldered into the adaptor, which plugs into the panel. Prices range from \$2.75 to \$6 each, depending on style and quan-



tity. Delivery time is stock to six weeks.

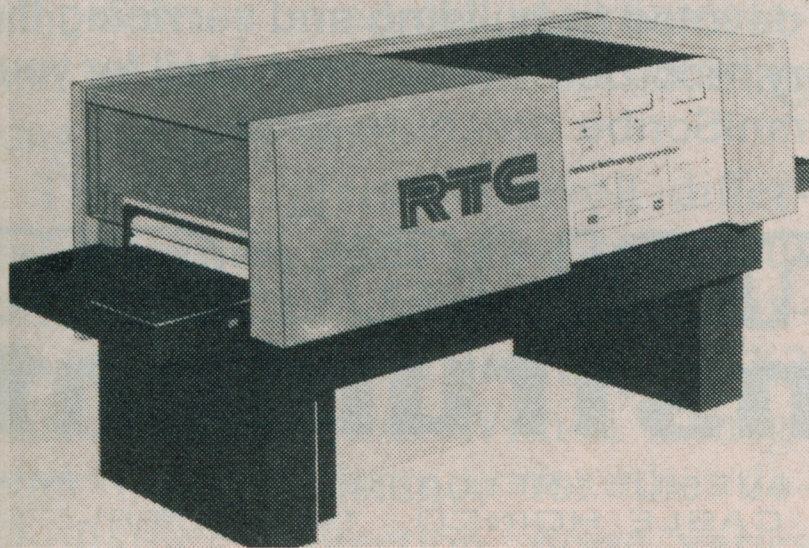
Augat Inc., 33 Perry Ave., Attleboro, Mass. 02703 [396]

Infrared system fuses

tin-lead plate to pc boards

Automating the fusion of tin-lead plate to printed-circuit boards, a conveyORIZED infrared system is said to achieve uniform plating thickness, distribution and composition on the boards. Single-sided, double-sided, and multilayer boards are processed in a single pass. Flux is automatically applied after the operator feeds the board into the conveyor entrance. The board is preheated to minimize warpage and then carried into the high-intensity infrared section where the tin-lead is fused to the copper. The board then passes through preliminary and final cooling stages. A spray-wash section is available as an option to clean and dry boards before delivery. Called the model F-1500, the system has digital displays, plus controls for conveyor speed and temperature.

Radiant Technology Corp., 13906 Bet-tencourt St., Cerritos, Calif. 90701 [397]



YOU CAN CREATE ALMOST ANYTHING WITH QT SOCKETS™

No matter what kind of circuits you're designing, it's easy testing them with QT (quick-test) SOCKETS™. ICs, transistors, resistors, capacitors, etc., are simply plugged in and interconnected with solid No.22 AWG hookup wire. There is no soldering required. And components and sockets can be re-used thousands of times. What's more, QT SOCKETS – featuring an exclusive snap/lock construction – can be assembled in any size combination of sockets and bussing strips. Prices start at \$2.00. QT SOCKETS – just the thing for bringing new ideas to life.

FREE SELECTION GUIDE

Check and return the reader service card for additional information, including application and product photos, drawings, specifications, socket sizes and ordering information.



Continental Specialties Corporation
325 East St., New Haven, Conn. Tel: 203 624 1811

Circle 169 on reader service card

PC PUSH BUTTON MODULES

Matchless circuit flexibility for coded inputs

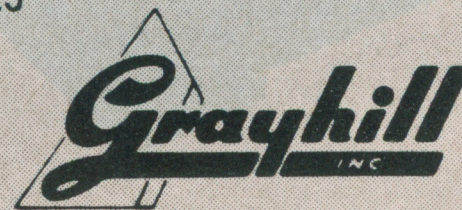
You can arrange these modules to suit your needs exactly. Available in 6-button, 3-button, 2-button and one-button styles. You can group them in arrays of any number of buttons, while maintaining the same center to center spacing.

Circuitry available as SPST through 4 PST, normally open. The poles also can be internally shorted so that several terminals become connected when button is actuated.

Unmatched diversity of input coding can be achieved with the proper array, appropriate circuitry selection for each push button and compatible PC board layout.

What application do you have in mind? We've got the low profile push button module and circuitry combination to meet it.

For more information on all Grayhill products, write today for our newest Engineering Catalog. Grayhill Inc., 523 Hillgrove Avenue, La Grange, Illinois 60525 (312) 354-1040



Circle 222 on reader service card

169